

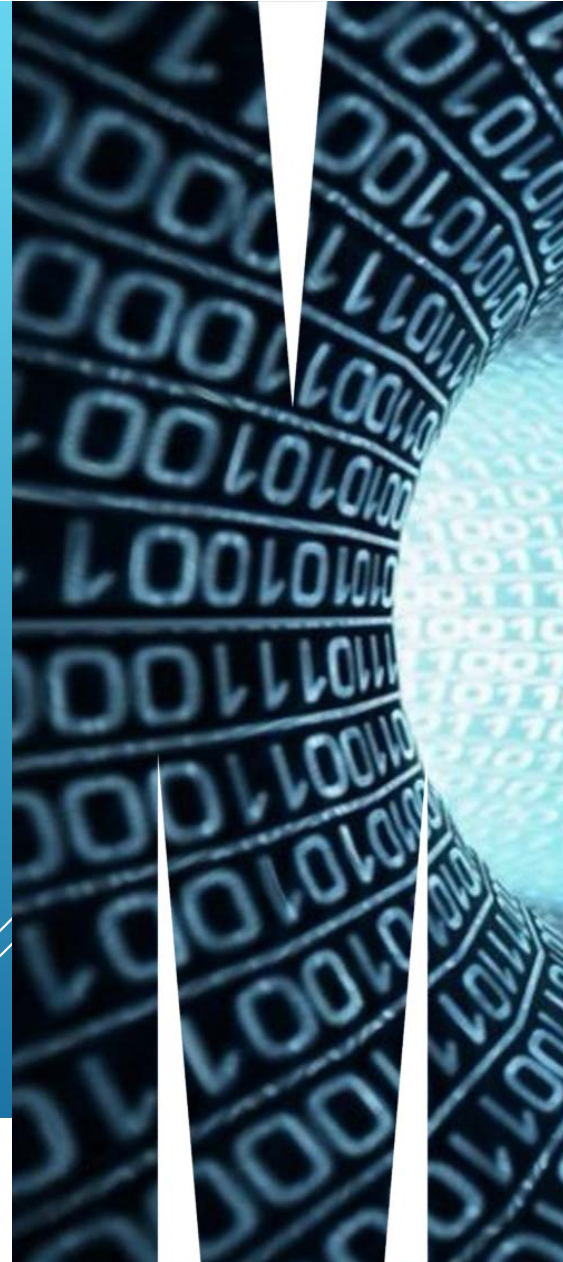
METAPHORICALLY SPEAKING

Cathrine Harboe-Ree
University Librarian
Monash University

CRIG/PDIG forum
2 May 2017



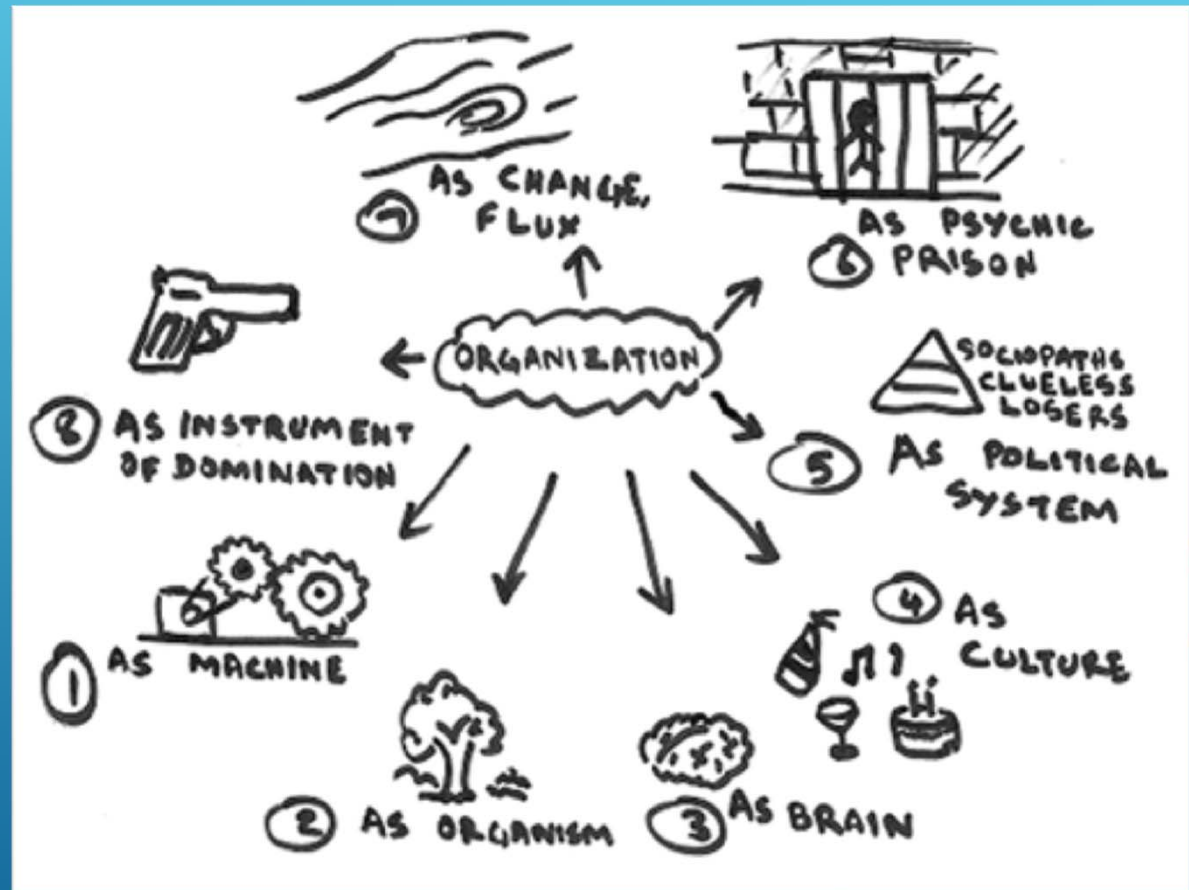
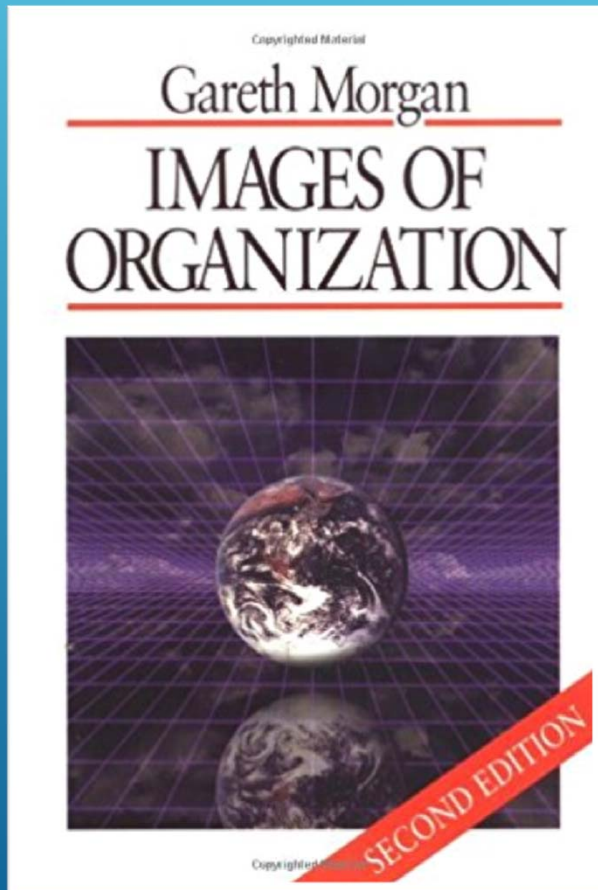
MONASH University



Imagine

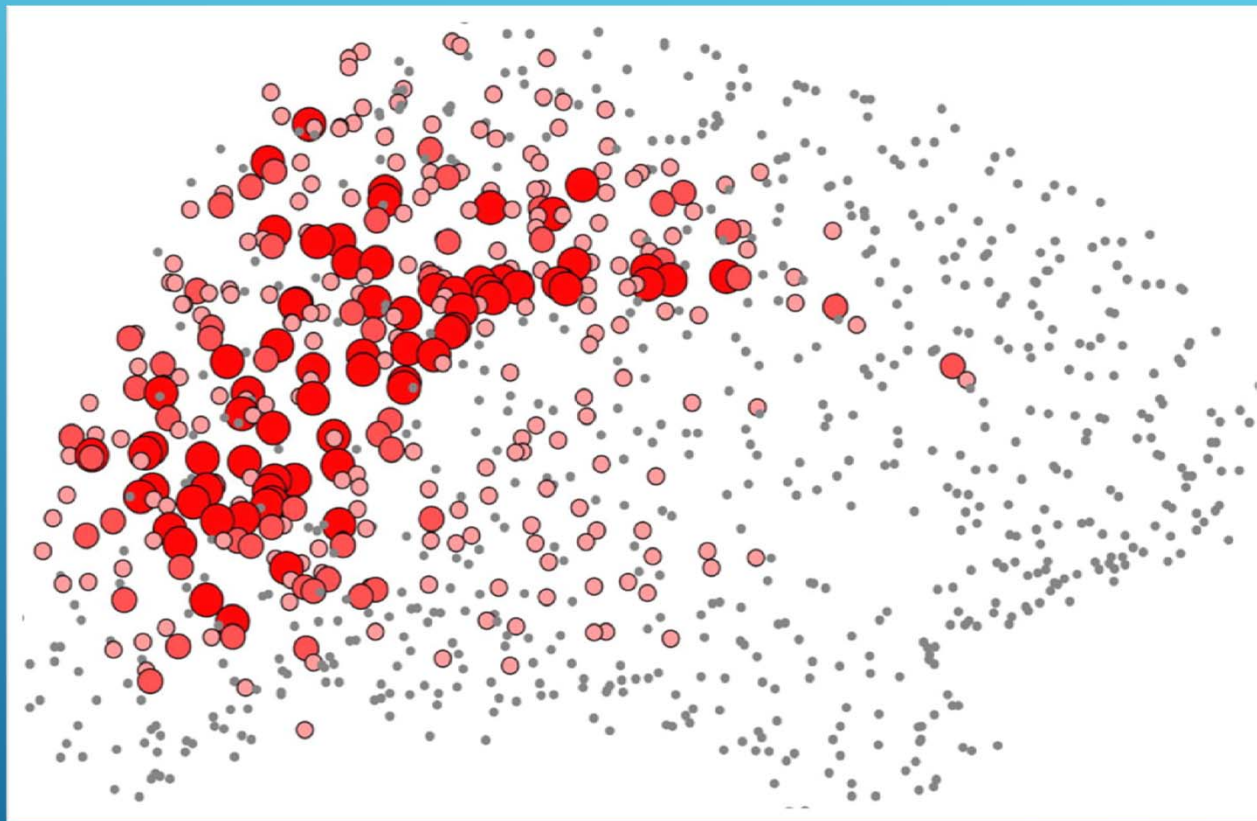


Organisations as metaphors



Gareth Morgan (1986, 1997, 2006) *Images of Organization*, Newbury Park, CA: Sage Publications

Diffuse libraries



Wendy Pradt Lougee: *Diffuse libraries: emergent roles for the research library in the digital age* (2002)
<https://www.clir.org/pubs/reports/pub108/pub108.pdf>

Shape-shifting

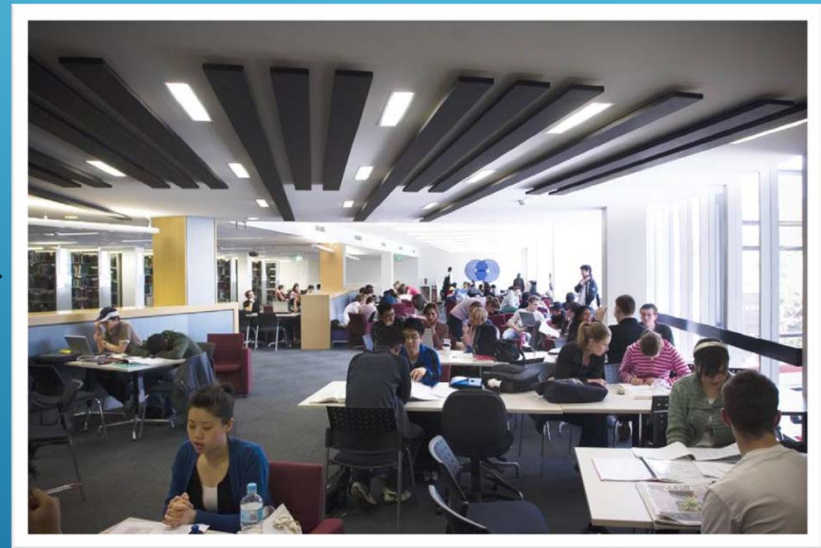
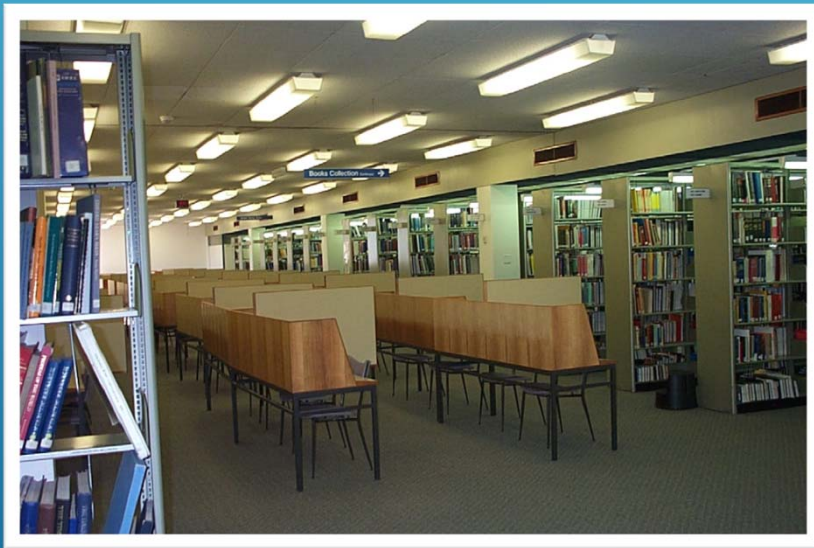


Image: <http://joshpeckdisclosure.blogspot.com.au/2015/11/angelic-genetics-how-shapeshifting-can.html>

Shape-shifting: collections



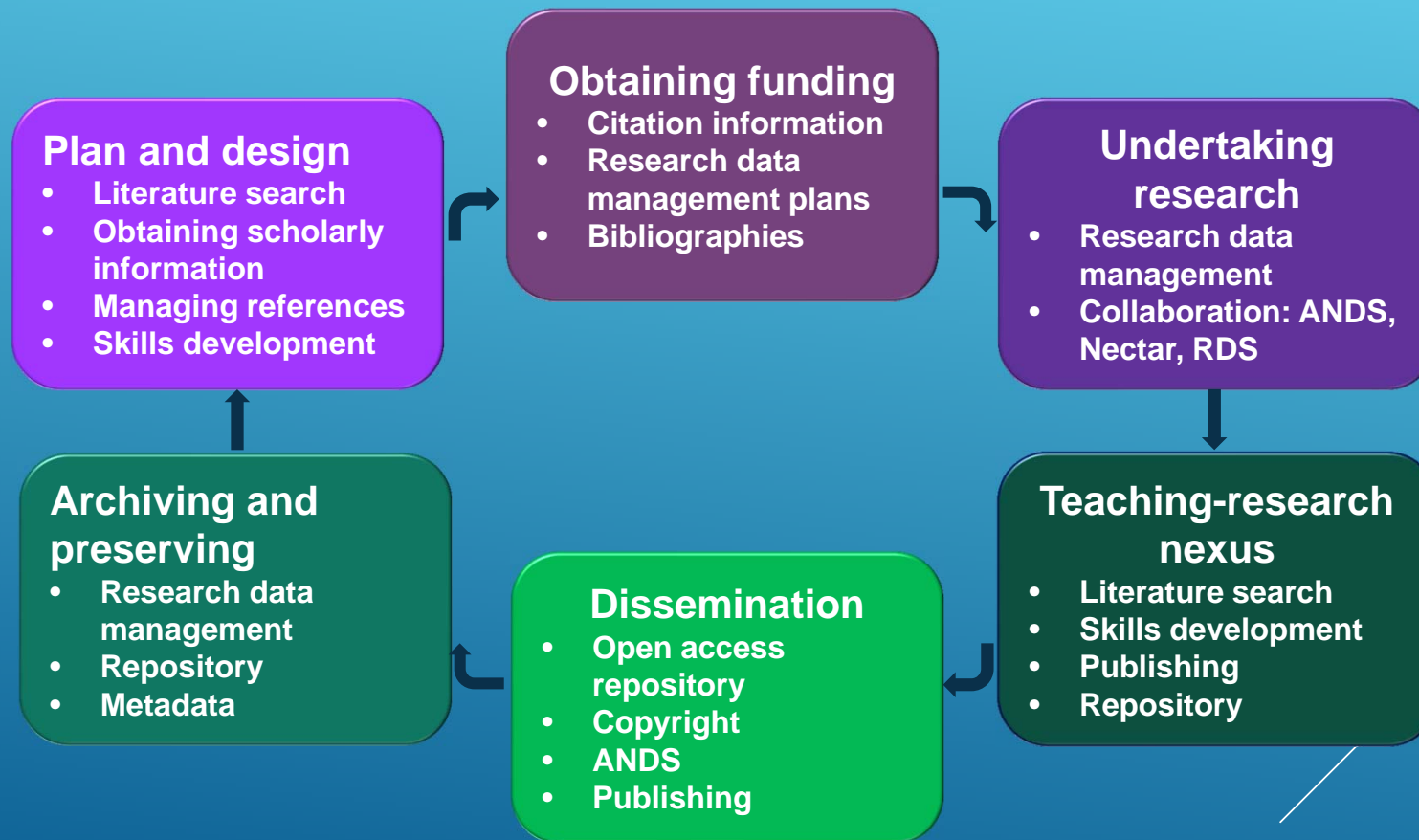
Shape-shifting: physical facilities



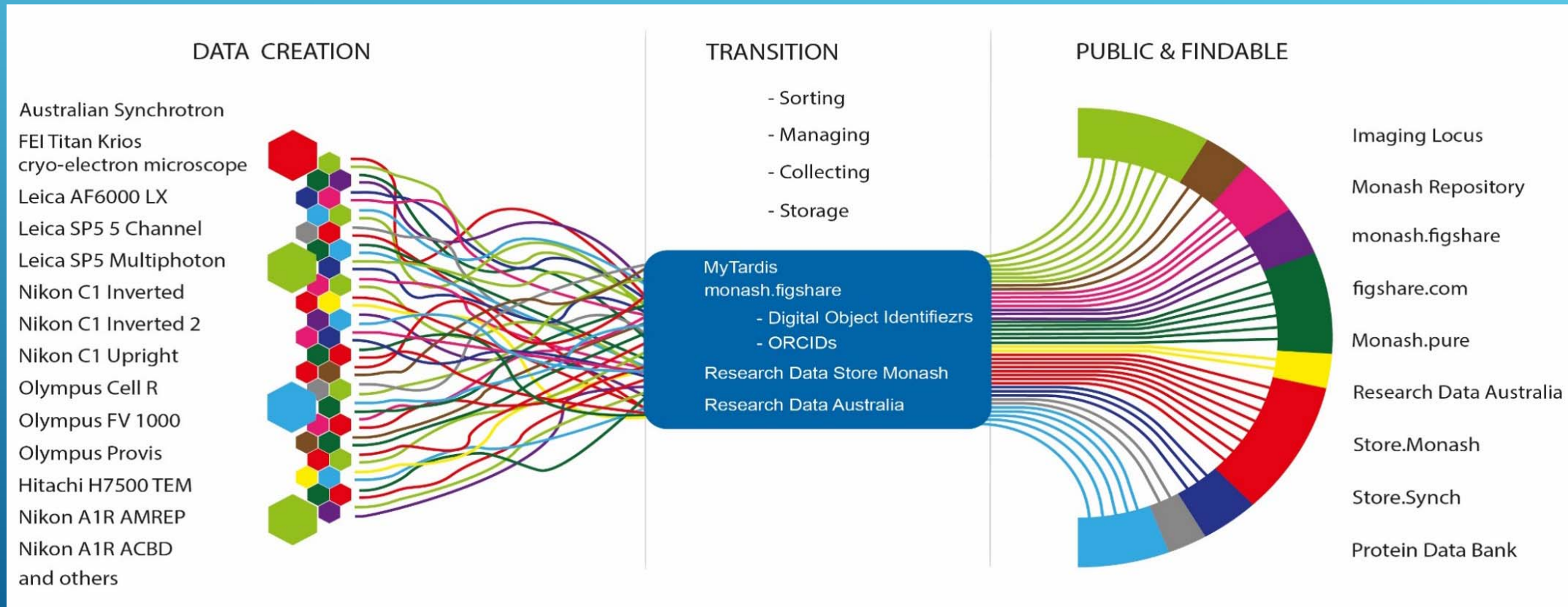
Shape-shifting: professional contribution



Research Cycle



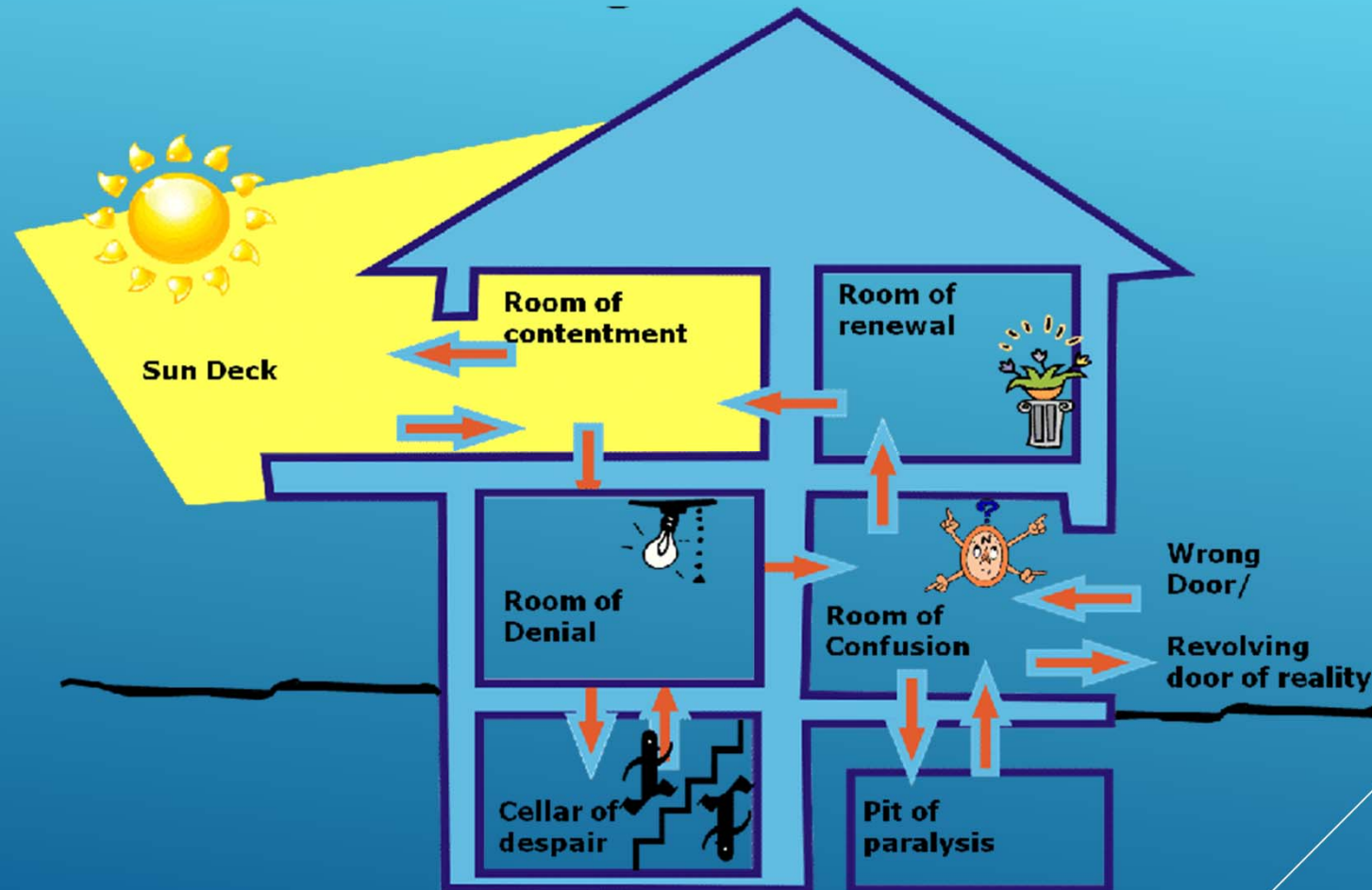
Research data ecosystem



Research and Learning Skills



Change House



Claes F Janssen, *The four rooms of change (Förändringens fyra rum)*, Wahlström & Widstrand, 1996

Image: <https://rapidbi.com/change-house-model/>

A reverse metaphor

What we will not be if we want to thrive:

- ▶ Sedan carriers
- ▶ Helpers
- ▶ Service providers/servants
- ▶ Supporters
- ▶ Widget processors



Image: Keisai Eisen - The Sixty-Nine Stations of the Kisokaido,
<https://commons.wikimedia.org/w/index.php?curid=2969030>



A full sea

There is a tide in the affairs of men,
Which, taken at the flood, leads on to fortune;
Omitted, all the voyage of their life
Is bound in shallows and miseries.
On such a full sea we are now afloat;
And we must take the current when it serves,
Or lose our ventures.

Julius Caesar (Act IV, Scene iii)
William Shakespeare

Image: <https://s-media-cache-ak0.pinimg.com/736x/79/7a/dd/797add888c86b2546a28cb79c5244d2d.jpg>

Thank you!

Questions?



MONASH University

